



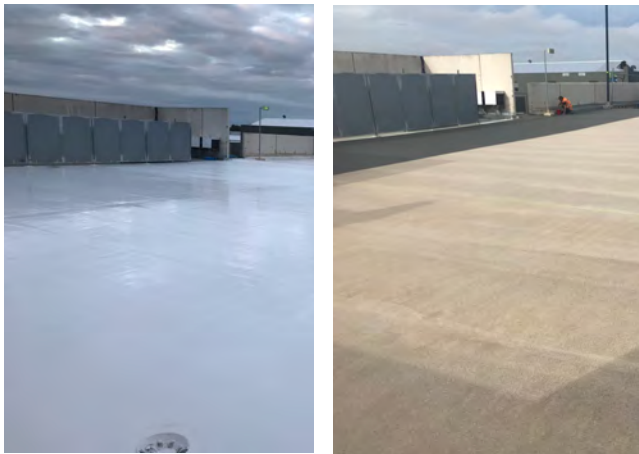
## Westfield Riccarton Rotherham



Preparation of substrate



Crack repair



Application of Waterproofing & Wearing Layer



Completed section of Topcoats to selected Carpark colours



Completed with Safety Colours to selected areas

**Project Name:** Westfield Carparks

**Project:** Carpark Remedial Refurbishments

**Products:** Polyac 18 Primer, Polyac BDM-M, Polyac 55, Polyac SL Fillers & Selected Aggrgates, Polyac 62 Topcoats

**Size:** Various m<sup>2</sup>

**Contractor:** Scentre Group Management - AUS/NZ